



TechEasy Pullet Cage System

-more tech, more care-



CAGE SYSTEM

TechEasy pullet cage is designed for pullets which bird age (rearing period) is from day 1 to day 120 old. This cage is widely used in Africa, Southeast Asia, South America, Middle East and other regions, easy to install and operate, higher technology makes rearing easier.



Both the cage meshes and cage stands are made by hot galvanization steel, which ensure the chicken cage can withstand the corrosion of chicken manure for a long time, the service time of the chicken cage can reach more than 15 years.

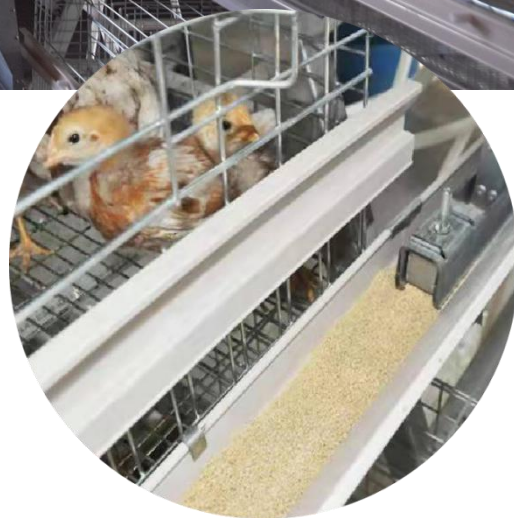


AUTOMATIC FEEDING SYSTEM



Feeding hopper is connected by rivets without welding, making it more durable.

The combination of feed trough and feed adjuster reduces the waste of feed and uniform feed feeding makes it easier to control the growth of chicks.



The feed silo is made of hot galvanized sheet, and the augers are made by TS from South Africa, also the best quality worldwide.

It can deliver 4.5 tons of feed per hour through automatic feeding system, make farming work easier.



AUTOMATIC DRINKING SYSTEM



Easy for pullets to get water from special designed nipple drinker, nipple drinker with cup can prevent water from dripping on the pullets and endanger the health of pullets.

The height of the drinking line is adjustable to fit different age of birds.

AUTOMATIC MANURE REMOVAL SYSTEM



The manure dropping from the cages in the manure pits, and the scraper can collect the manure from manure pits to the outside of house.

The scraper is made by hot dip galvanized, has better corrosion resistance.

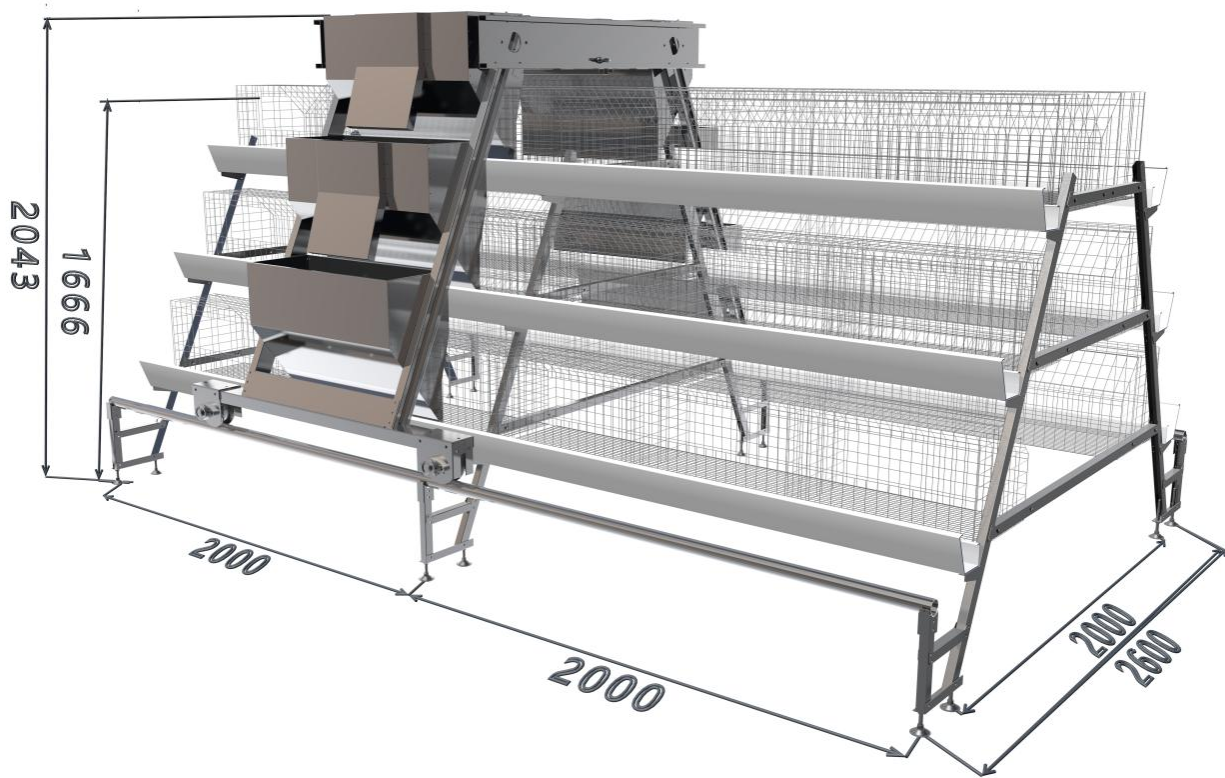


Using high-strength hemp rope for traction, with a service life of 20 years.

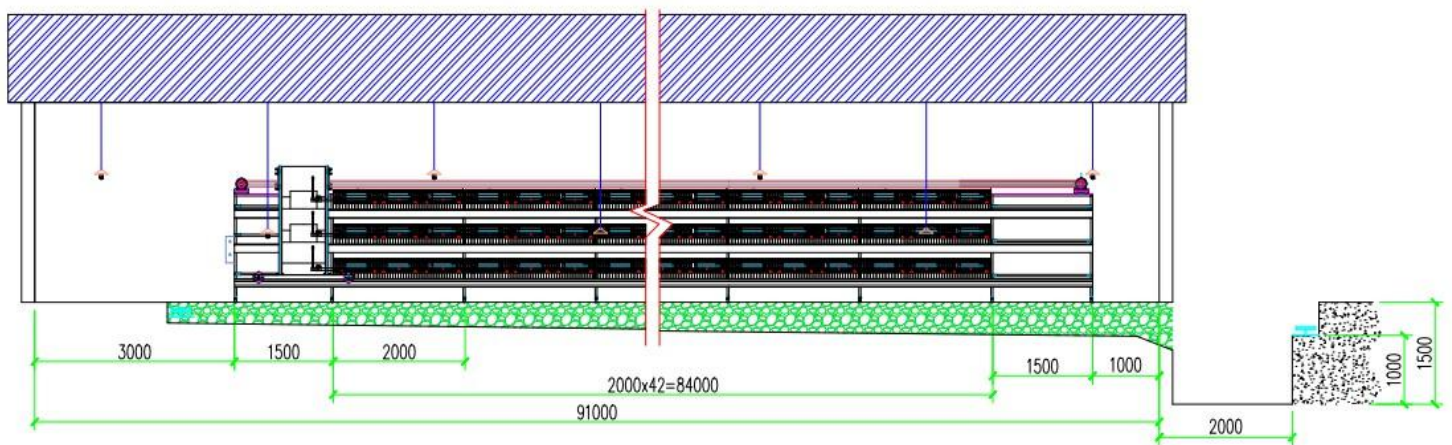
According to the size of chicken house, one motor can control multiple scrapers, low cost and easy to install and operate.



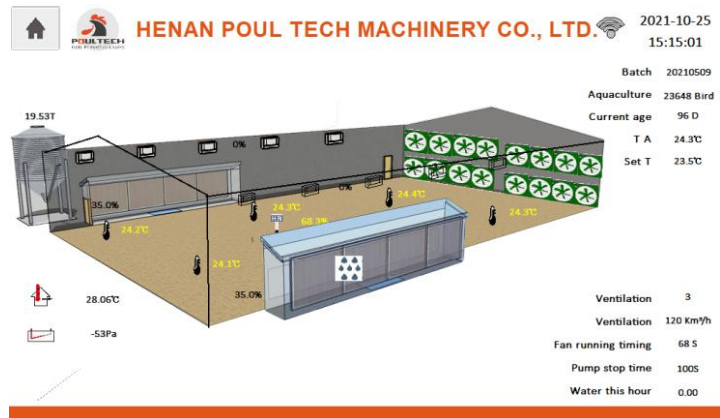
TECHEASY SERIES SPECIFICATIONS



Type No.	Dimension /Unit (mm)	Tier/Set	Cells per set	Birds Per Cell	Birds Per Set
TechEasy 162	1950*500*370	3	18	9	162
TechEasy 216	1950*550*370	4	24	9	216



CLIMATE CONTROL SYSTEM



TechEasy environment control system (PT-605) is an automatic system independently developed by Poul Tech. The system can automatically monitor the temperature and humidity of the chicken house, realizing an intelligent control mode, easier to optimize the environment of chicken house.

50" galvanized sheet fans equipped with Japan belts and Siemens motors, the cooling pad is made of polymer material, which has better water absorption and mildew resistance. Longer service life and easier installation.

Poultry house heater is powered by diesel, natural gas, or kerosene, provide a warm environment for newborn chicks.



HENAN POUL TECH MACHINERY CO., LTD.

ADD: ROOM NORTHEAST, 14 FLOOR, NATIONAL UNIVERSITY TECH PARK, CHANGCHUN ROAD, ZHENGZHOU HIGH-TECH ZONE, HENAN, CHINA.

HOTLINE: +86-(0)371-56797621

EMAIL: poultech@aliyun.com poultrytech@yahoo.com

MOBILE (WhatsApp & WeChat): +86 13733845866

WEBSITE (English): www.cnpoultech.com