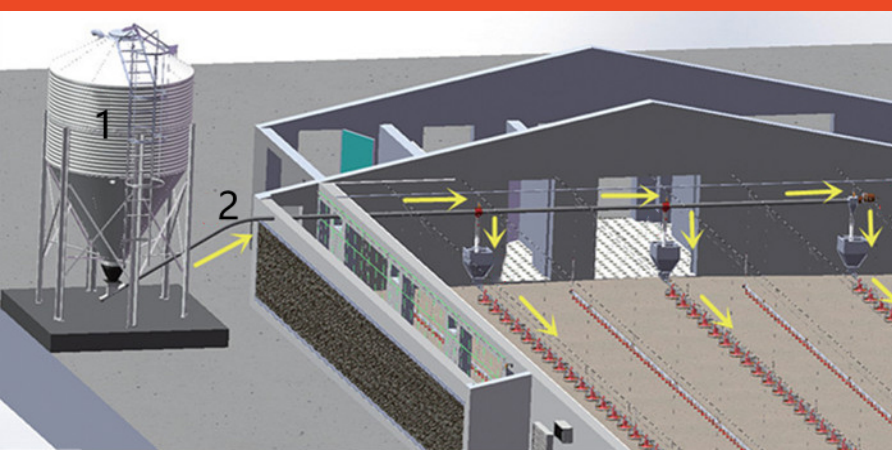




TechFloor Broiler System

-more tech, more output-



1. Feed storage silo

The feed silo is made of hot galvanized sheet to ensure that it is not easy to corrode outdoors. It can store feed for 2-3 days.

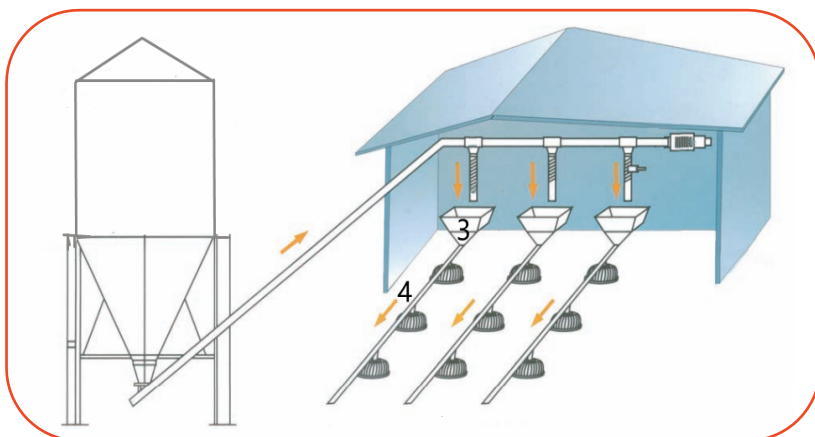
2. Main feed line

Φ90 outer pipe and Φ75 feed auger (are made in Technical System) can deliver 3 tons feed per hour. It is equipped with a feed dropping sensor, which can automatically stop feeding.



MAIN FEEDING LINE SYSTEM

PAN FEEDING SYSTEM



4. Vice feed hopper

600mm*600mm vice feed hopper acts as an intermediary to transfer the feed in the silo into each pan feeder.

3. Pan feed line

The hot galvanized pipe contains the auger, which can transfer the feed from the vice feed hopper to the end of the house.



The pan feeder has four gears to adjust the amount of feed in the pan feeder. Meet the feed intake of chickens of different ages.



The corrugated bottom can reduce too much feed accumulation and ensure the freshness of the feed. Avoid chicks resting in the pan.

The edge of the pan is inclined to the middle to avoid feed waste.



NIPPLE DRINKING SYSTEM

The front part of the drinking line can not only complete the normal water supply and dosing functions, but also clean the flushing tube line, which can effectively flush the sediment and dirt in the system. It has a protective effect on the system and reduces the workload of maintenance.



The filter can effectively filter impurities in the water source to ensure healthy drinking water for chickens.

The medicine pumps can prevent the chickens from epidemics and ensure their healthy growth.



Pressure Regulator

- Adjusting the water pressure according to the bird age, easy to operate.
- Display pipe is made by transparent soft material , convenient to observe water pressure and lift the water line during harvest
- Simplified design, and easy to change from water drinking to flushing

Nipple shell adopt high-quality engineering plastic, and the interior nipple is stainless steel. Long-term water supply but no rust.

The position of the drinking spout is scientific, with 360° water output, making it easy for chickens to drink.



CLIMATE CONTROL SYSTEM



Easy operation, set the fan parameters according to the site conditions, and ensure the temperature and ventilation of the chicken house during extreme weather.

Easy observation. Fans are equipped with a fully automatic control system, and the operation of fans can be observed through the display screen.



Equipped with cooling pads, the fresh air is cooled by the wet curtain and sent to the chicken house to provide moist air for the chickens.

Air inlet windows adopt ABS material, moisture-resistant and corrosion-resistant, fadeless. Precise control of opening and closing angle to adjust of air intake



Poultry heater provides chicks heat, maintains the ambient temperature required for the chick to grow.



Environment controller is Agrologic brand from Israel.

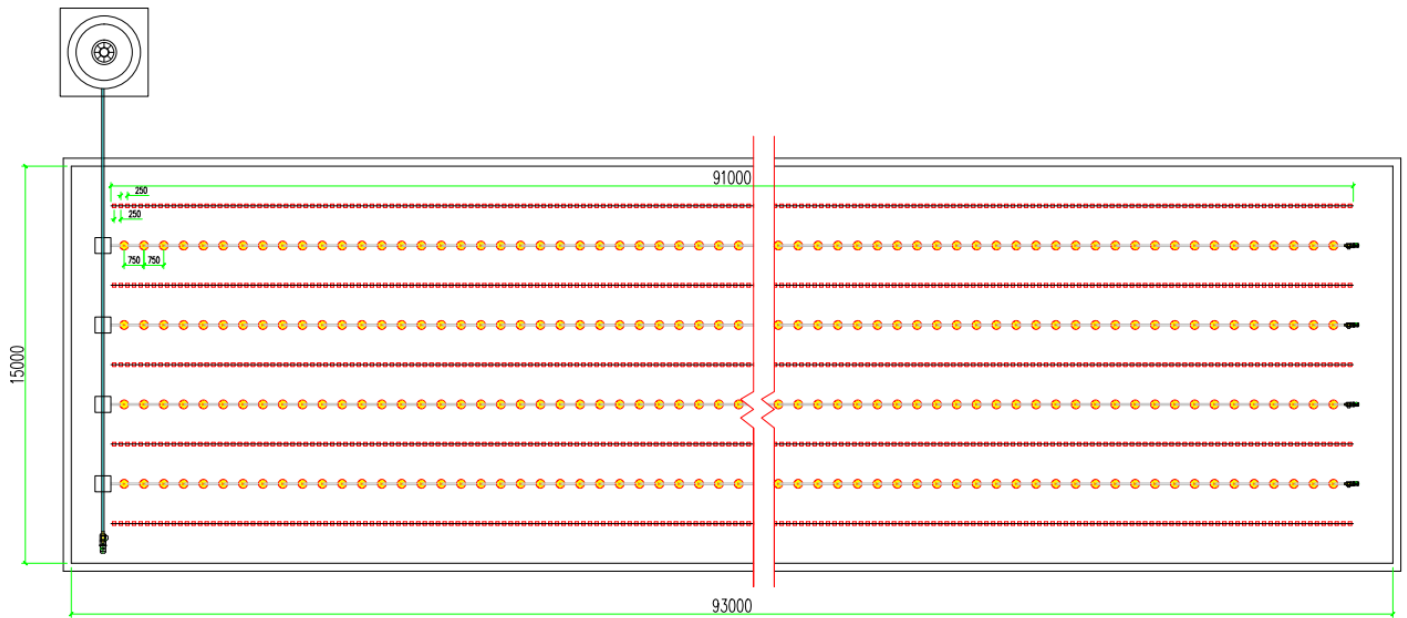
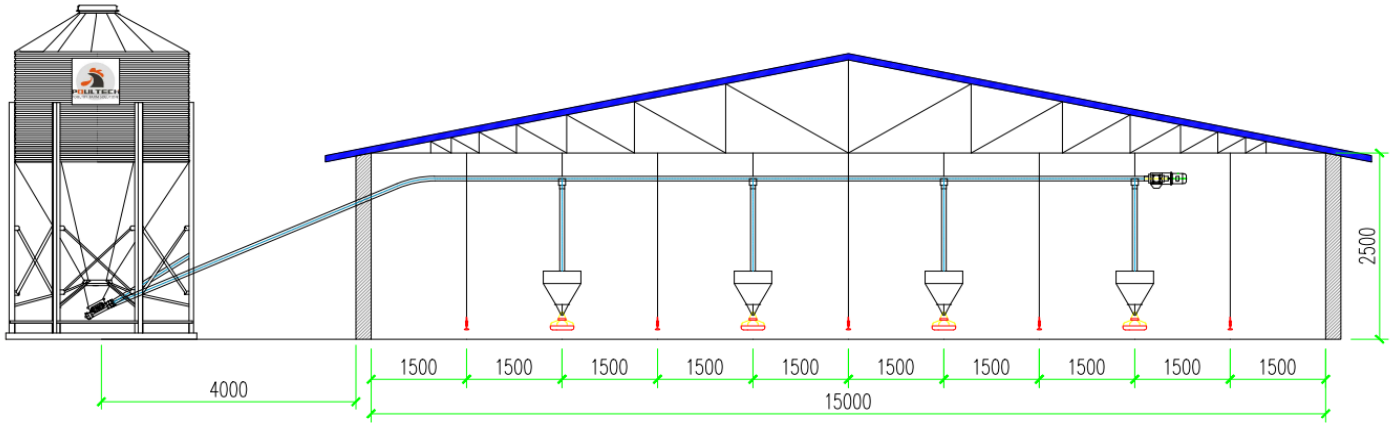
The controller is specially customized for the TechFloor broiler system. It can automatically control the opening and closing of fans, cooling pads and air inlet windows.

Achieve the purpose of controlling the temperature in the house and provide a comfortable growing environment for the chickens.

ELECTRIC CONTROL SYSTEM



The operation is easy and fast, and each button independently controls different feeding line and drinking line, and 2-3 workers can manage the entire chicken house.



HENAN POUL TECH MACHINERY CO., LTD.



ADD: ROOM NORTHEAST, 14 FLOOR, NATIONAL UNIVERSITY TECH PARK, CHANGCHUN ROAD, ZHENGZHOU HIGH-TECH ZONE, HENAN, CHINA.

HOTLINE: +86-(0)371-56797621

EMAIL: poultech@aliyun.com poultrytech@yahoo.com

MOBILE (WhatsApp & WeChat): +86 13733845866

WEBSITE (English): www.cnpoultech.com