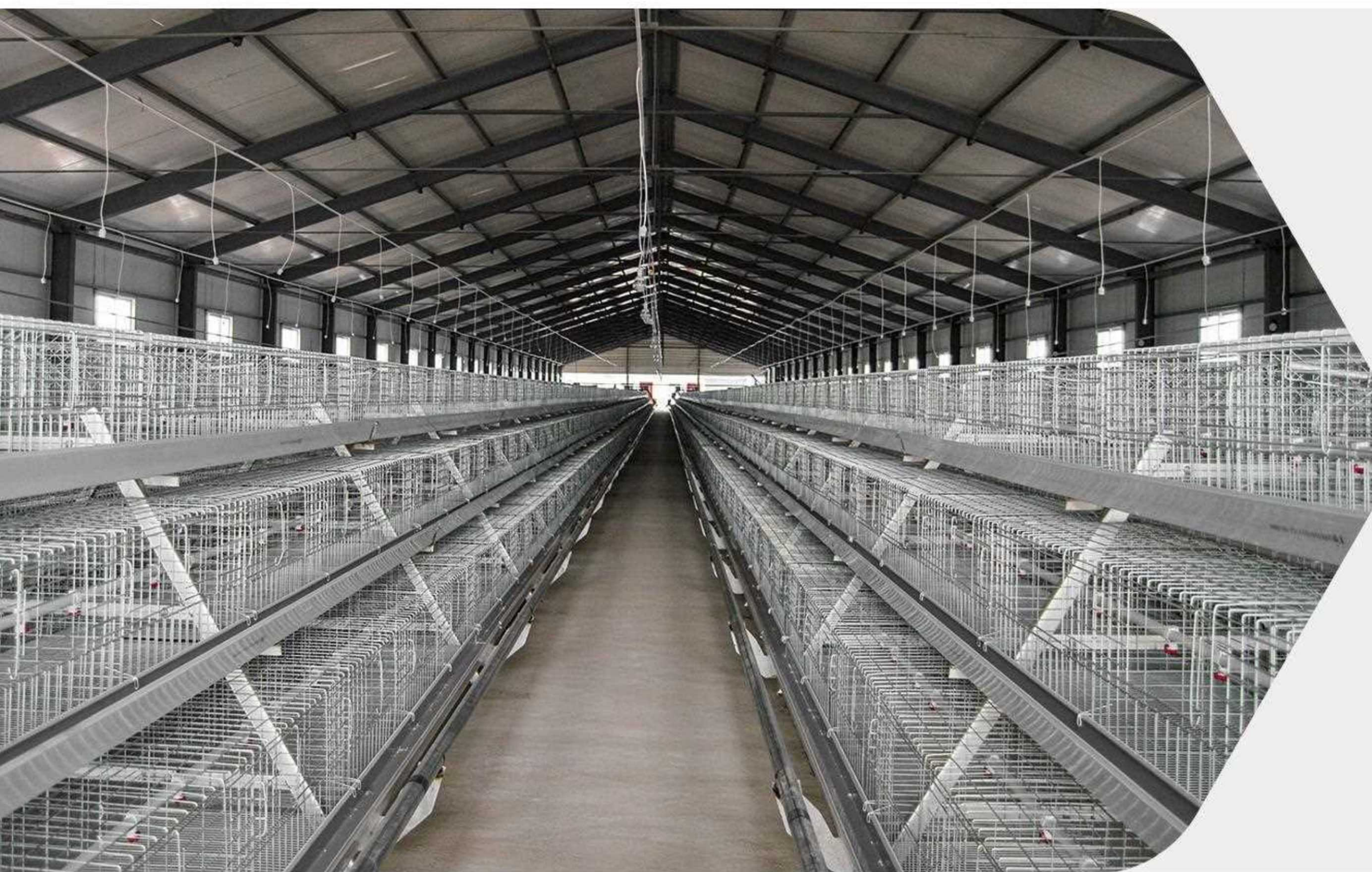




# TECHEASY PULLET CAGE SYSTEM

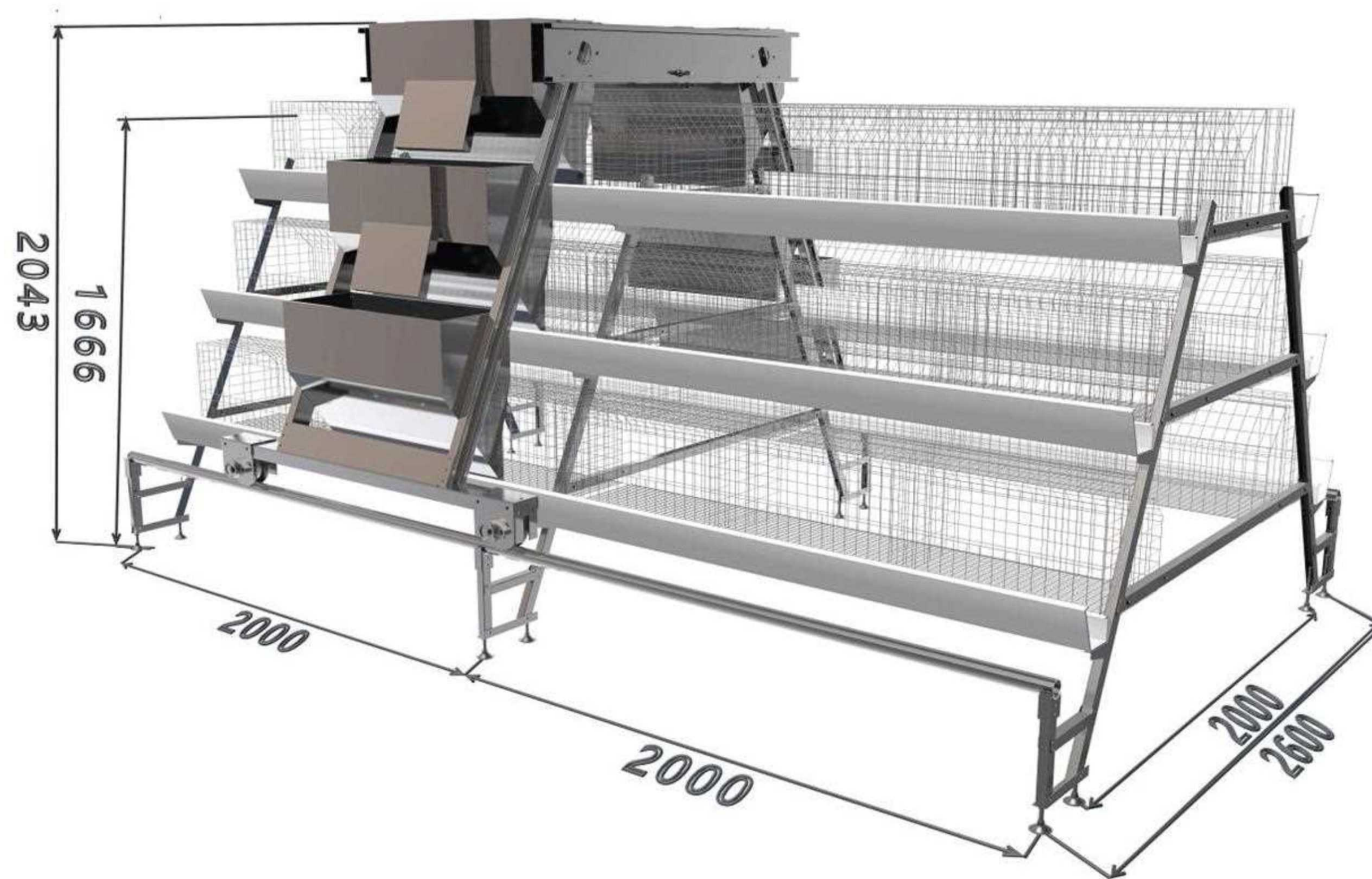
-MORE TECH , MORE CARE-



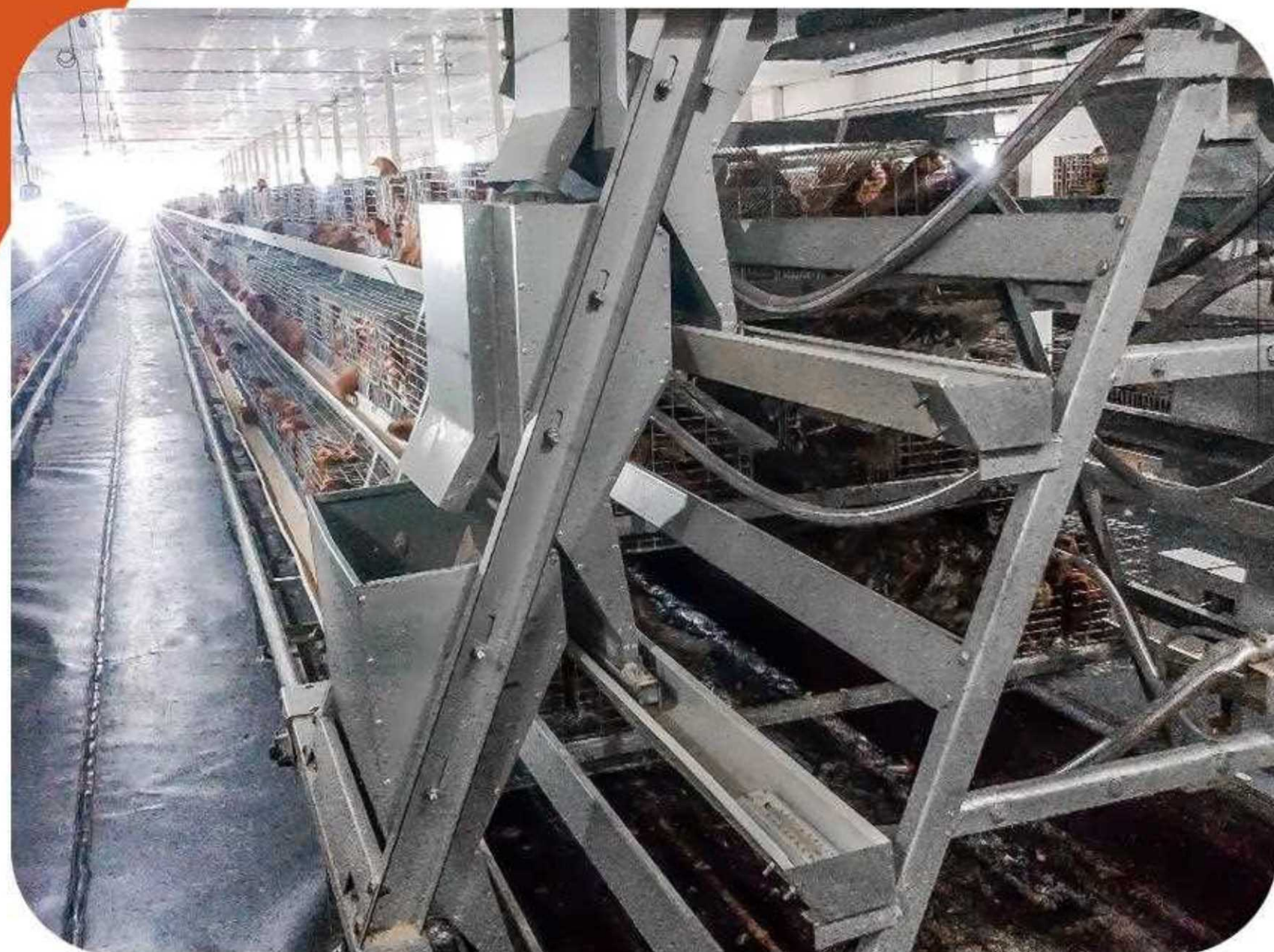
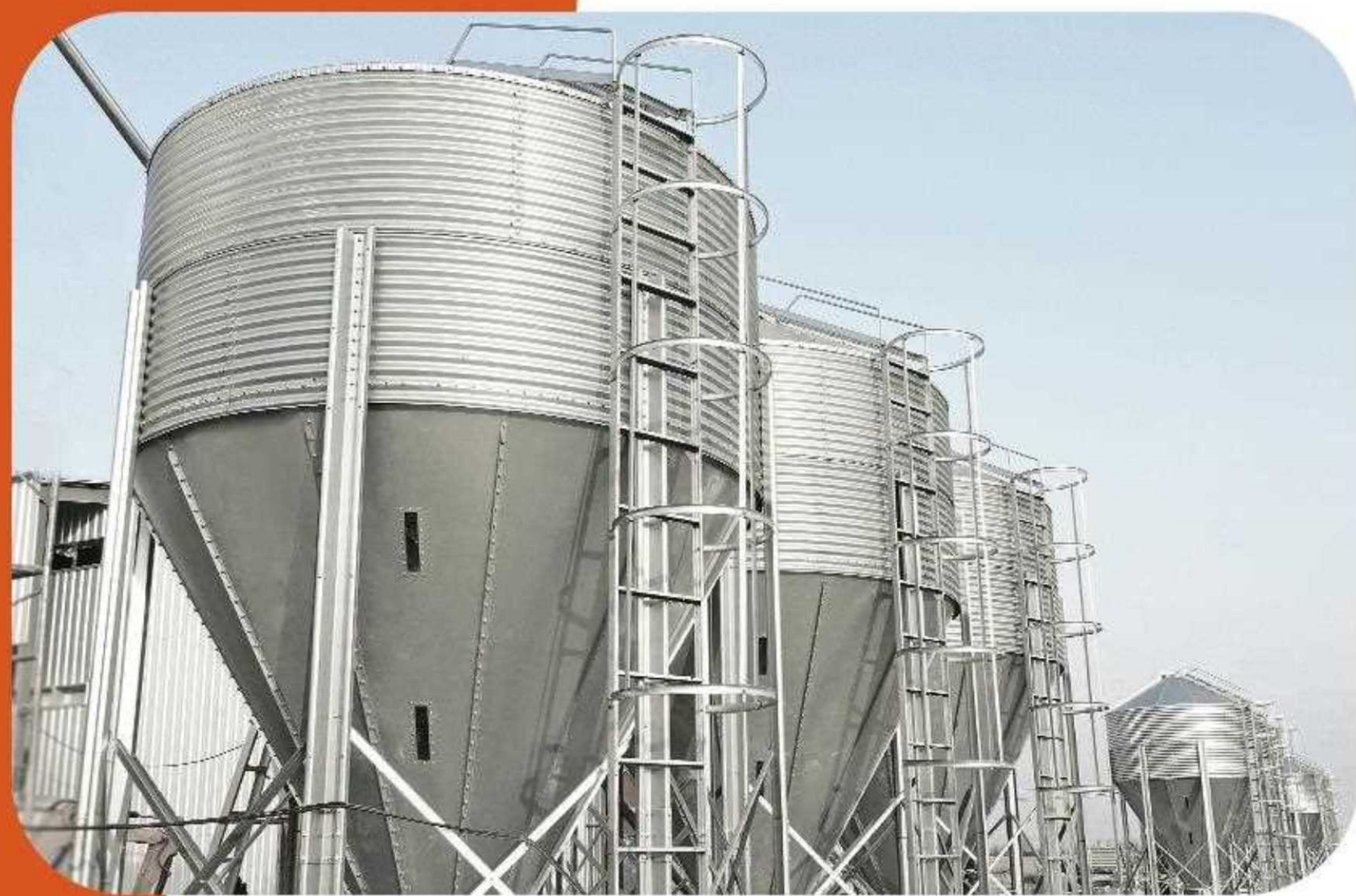
**CAGE STRUCTURE**

- Each unit dimension of the pullet cage is 1950\*500\*(350--400) mm, 3 cells per unit, with 9-10 birds per cell, each cell dimension is 650\*500\*(350-400) mm, so each birds can get 390--433cm<sup>2</sup> at least within 17 weeks
- Bottom net is densely welded together, the plastic cushion which put on the bottom cage mesh can protect the pullet feet and make them more comfortable

- Both the pullet cage meshes and cage support leg frames are processed by hot dipped galvanization because this system usually working 3 recycles per year and most of them working in high temperature and humidity houses
- Zinc-aluminum coated cage wire mesh, 3-4 times better protection against corrosion compared to galvanized wire

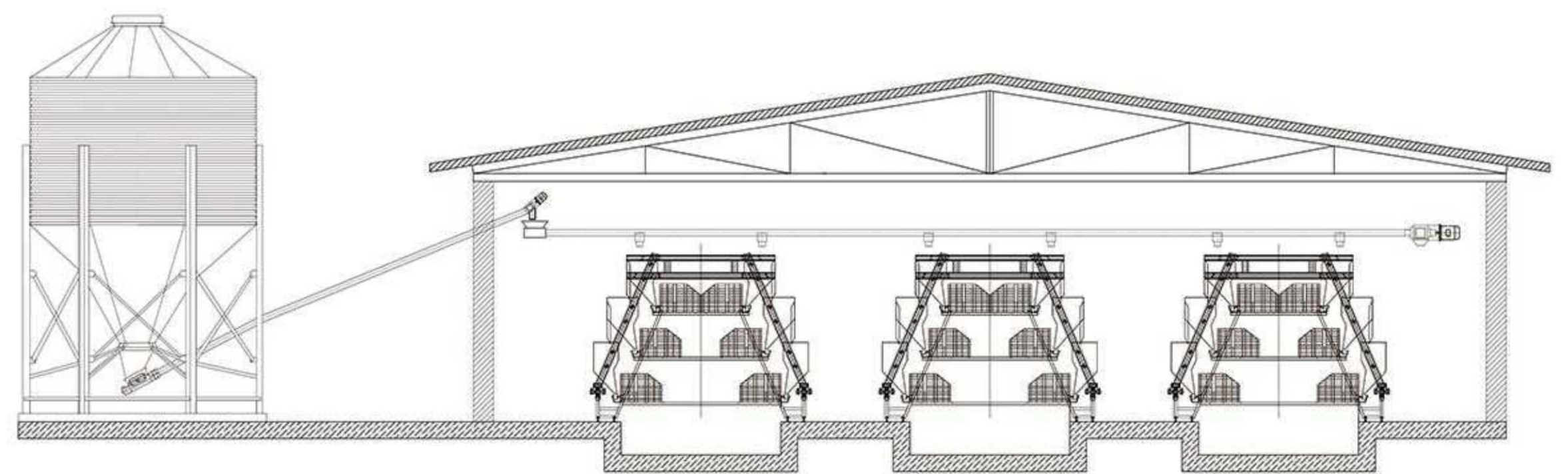


Type No.	Dimension /Unit (Mm)	Tier/Set	Cells per set	Birds Per Cell	Birds Per Set
<b>TechEasy 162</b>	1950*500*380	3	18	9	162
<b>TechEasy 216</b>	1950*550*380	4	24	9	216



## AUTOMATIC FEEDING SYSTEM

- The feed silo and main feeding line which auger diam 110 mm can delivery about 3.5 tons per hour



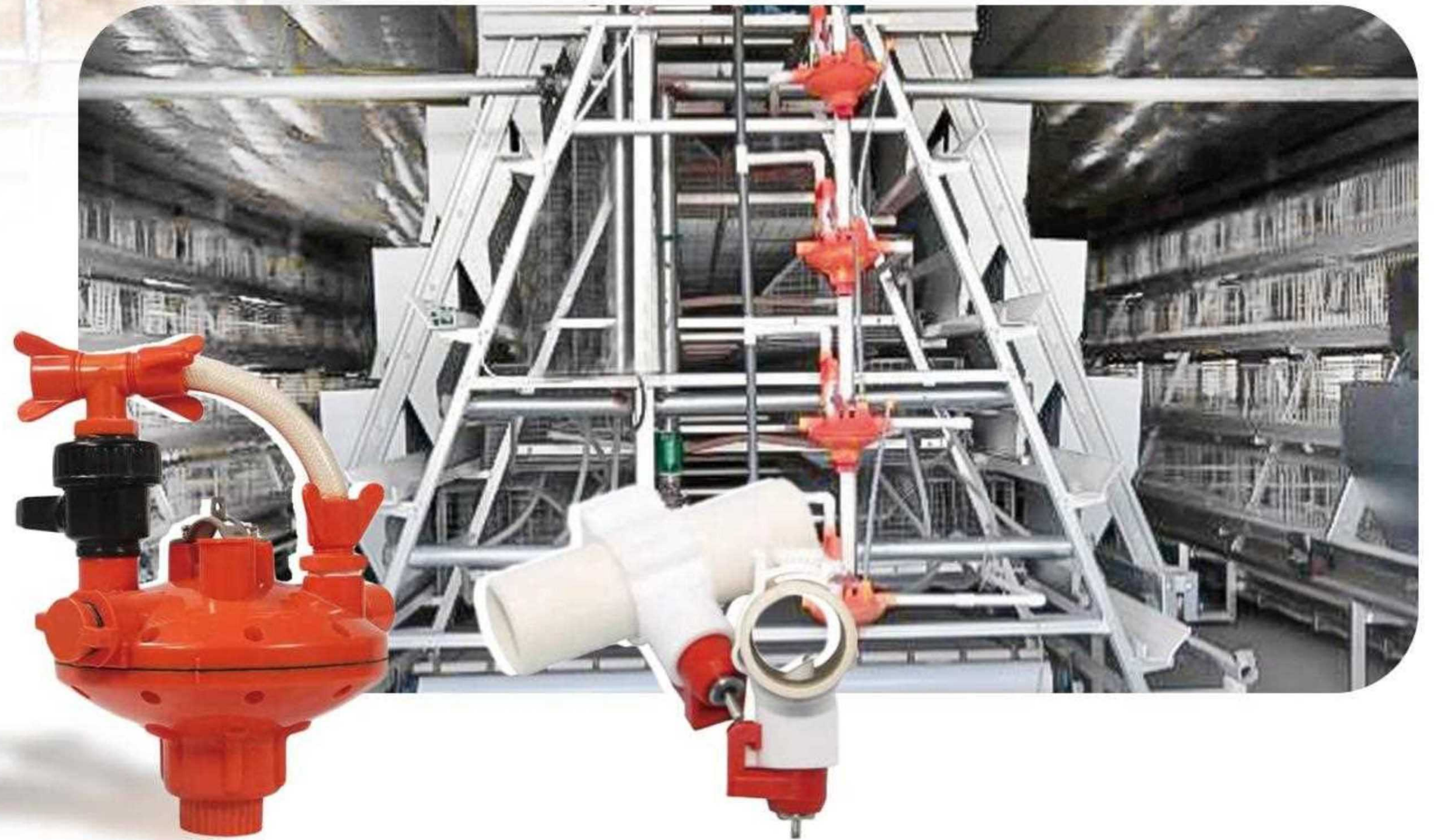
- Feeding method: feeding cart or chain feeding



- Easy feeding management: the electric control box controls the entire feeding system, and one person can realize the feeding of the entire chicken house

# AUTOMATIC DRINKING SYSTEM

- With 360 degree flowing nipple drinkers, water drip cups and water pressure regulators, terminals, splits, water filters makes sure the water is clean and no harmful to the layers
- The position of the drinking spout is scientific, with 360° water output, making it easy for chickens to drink
- Water regulator is located on each tier of the cage. It supplies the water from the water line to the pipes through reservoirs with the proper pressure
- The filters and the medicator are used to clean the water and keep health of all chickens



- Overall water line can be adjusted in height according to the growth cycle, meeting the water supply needs of pullets in different growth period
- During the early stage of pullets, small plastic feeders and drinkers are configured, and pads can be laid at the bottom of the cage

**-MORE TECH, MORE CARE-**

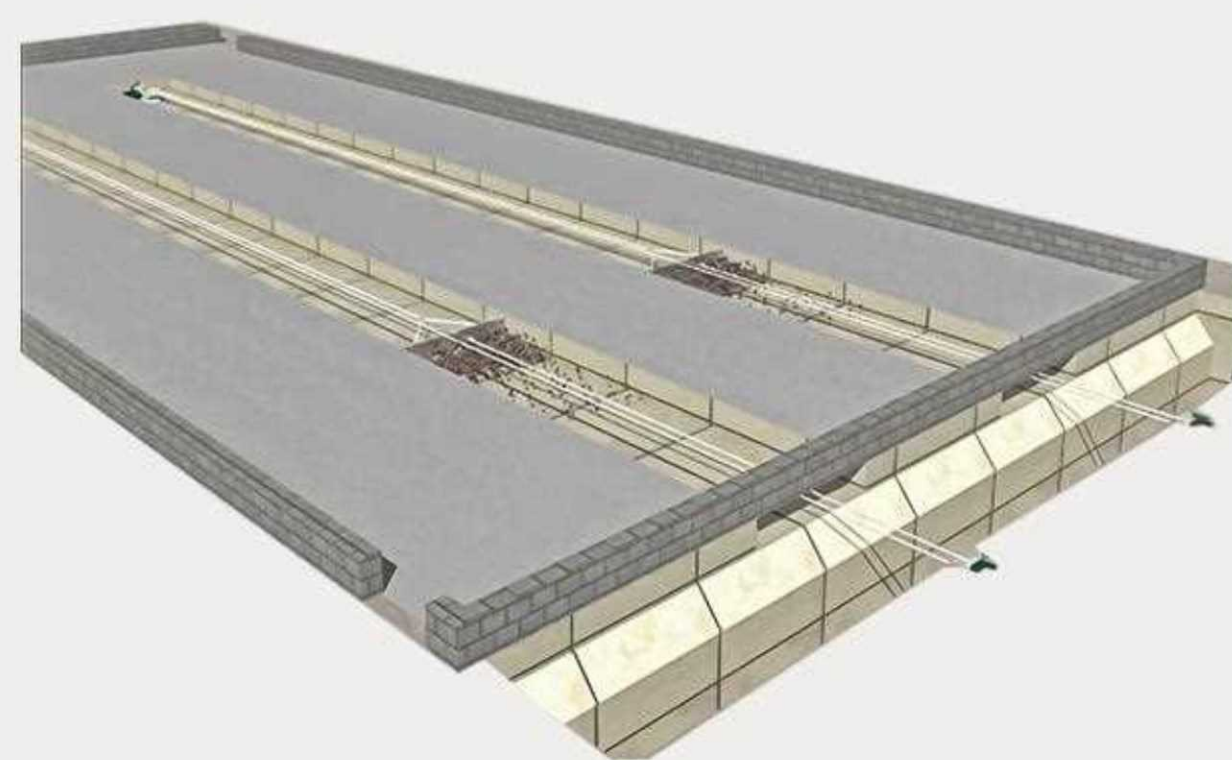
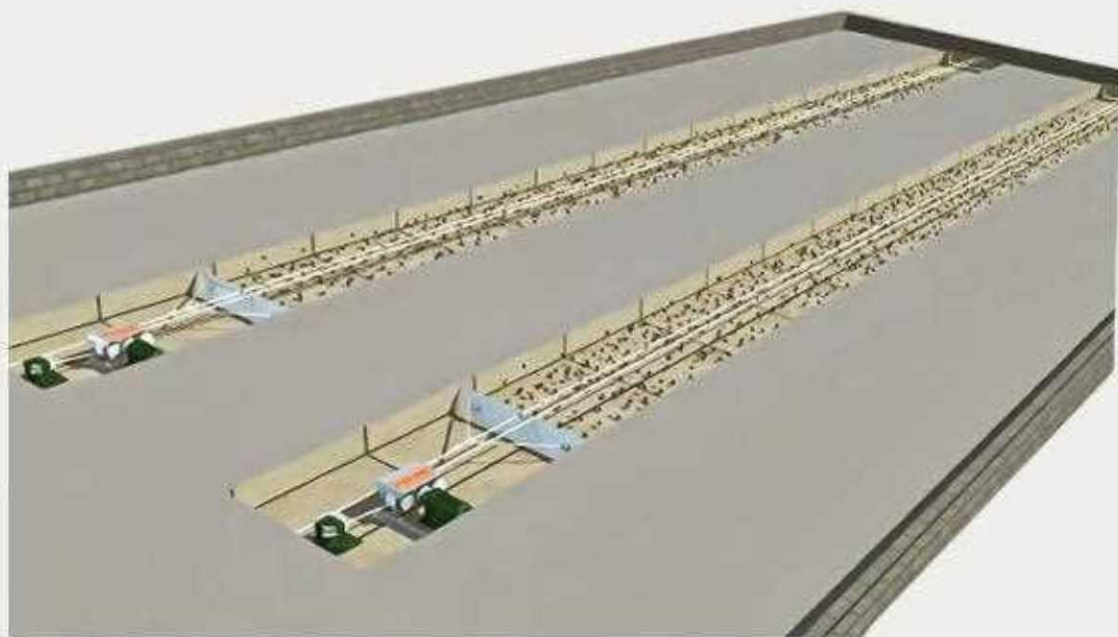


# AUTOMATIC MANURE REMOVE SYSTEM



- The scraper type manure collection machines is designed for TechEasy layer cage systems which has manure channel under the cages

- The automatic scraper manure removal machine made of hot galvanized material, good anti-corrosion performance and low cost



- The machines in each row can operate independently, making it easier to remove chicken manure in any row

# VENTILATION SYSTEM



- Ventilation Fans : To control the speed of the wind and provides the comfortable somatosensory temperature
- Environment controllers with PLC control units according to the set temperature to control the ventilation fans, cooling pads, air inlets running automatically



- Cooling pad can be used in conjunction with the wind plates to create a circulation inside the house
- IOT system is available, all equipment and data can be monitored remotely



- Air inlets adopt ABS material, moisture-resistant and corrosion-resistant, fadeless
- The central control box can be customized according the requirement and the house situation





**ADDRESS**

NO.111 CHANGCHUN ROAD, ZHENGZHOU HIGH-TECH ZONE, HENAN, CHINA

**HOTLINE**

+86-(0)371-56797621

**E-MAIL**

poultech@aliyun.com

**MOBILE (WhatsApp & WeChat)**

+86-13733845866

**WEBSITE**

[www.cnpoultech.com](http://www.cnpoultech.com)



**HENAN POUL TECH MACHINERY CO.,LTD.**