



# TECHPRO SERIES LAYER CAGE SYSTEM

- MORE TECH, MORE EGGS -





## **TECHPRO LAYER CAGE SYSTEM.**

**POUL TECH** Machinery is a professional factory of poultry equipment manufacturer in China, TechPro series layer cage is one of our mainly products

With the exquisite technique, TechPro layer cage equipment has long service life, high functional reliability, humanized management and convenient operation, it's aims to supply villa style living environment for layer in modern farms

POUL TECH







## CAGE STRUCTURE

- Frame type structure with much more support and high stability
- Main structure is made of 275g/m<sup>2</sup> hot-dipped galvanized steel sheet.
- Cage frame:  $\delta \approx 2$  mm, beam  $\delta \approx 1.5$  mm, feed trough:  $\delta \approx 1.0$  mm
- The cage frame can be customized according to the requirements

- Zinc-aluminum coated cage wire mesh, 3-4 times better protection against corrosion compared to galvanized wire
- With additional top cover for each tier, no running out of the cage
- The cage wire mesh can be customized according to the requirements

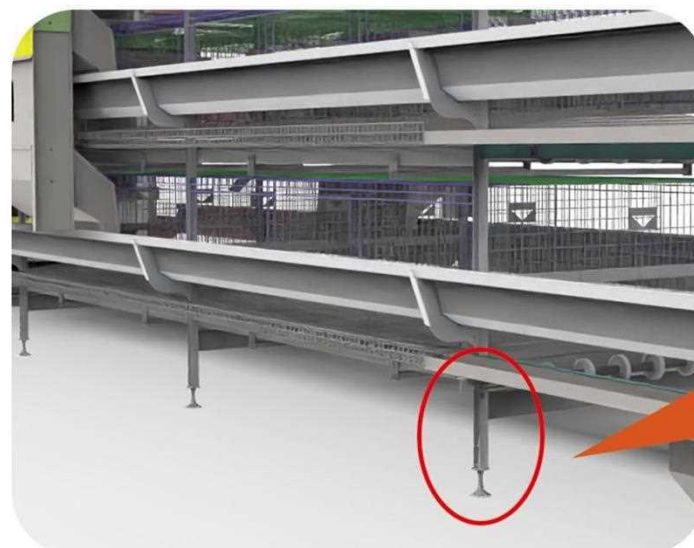


## CAGE STRUCTURE CONNECTION

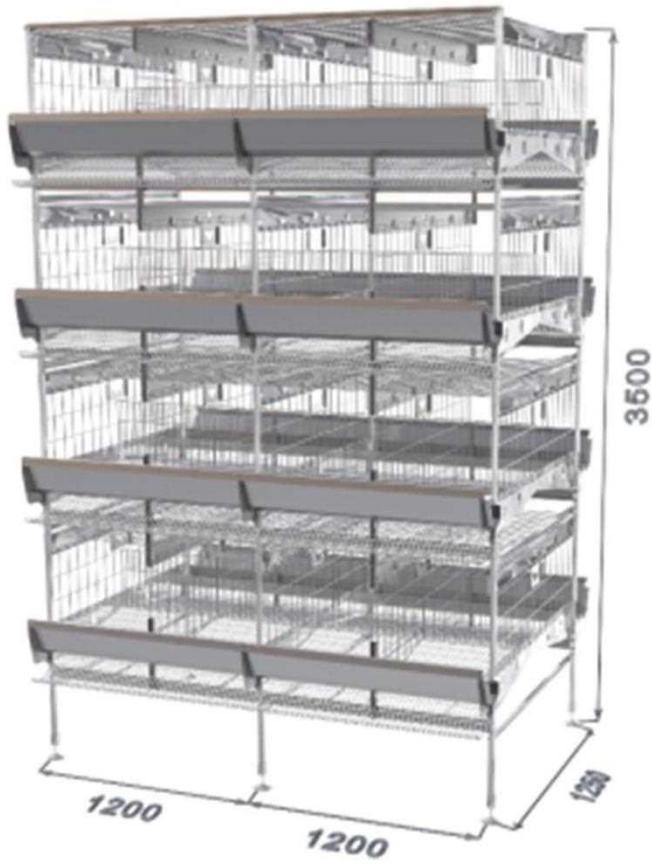
- The entire cage structure system has no welding
- The rivets or screws of the connecting parts are made of # 304 stainless steel

## ADJUSTABLE BOLT

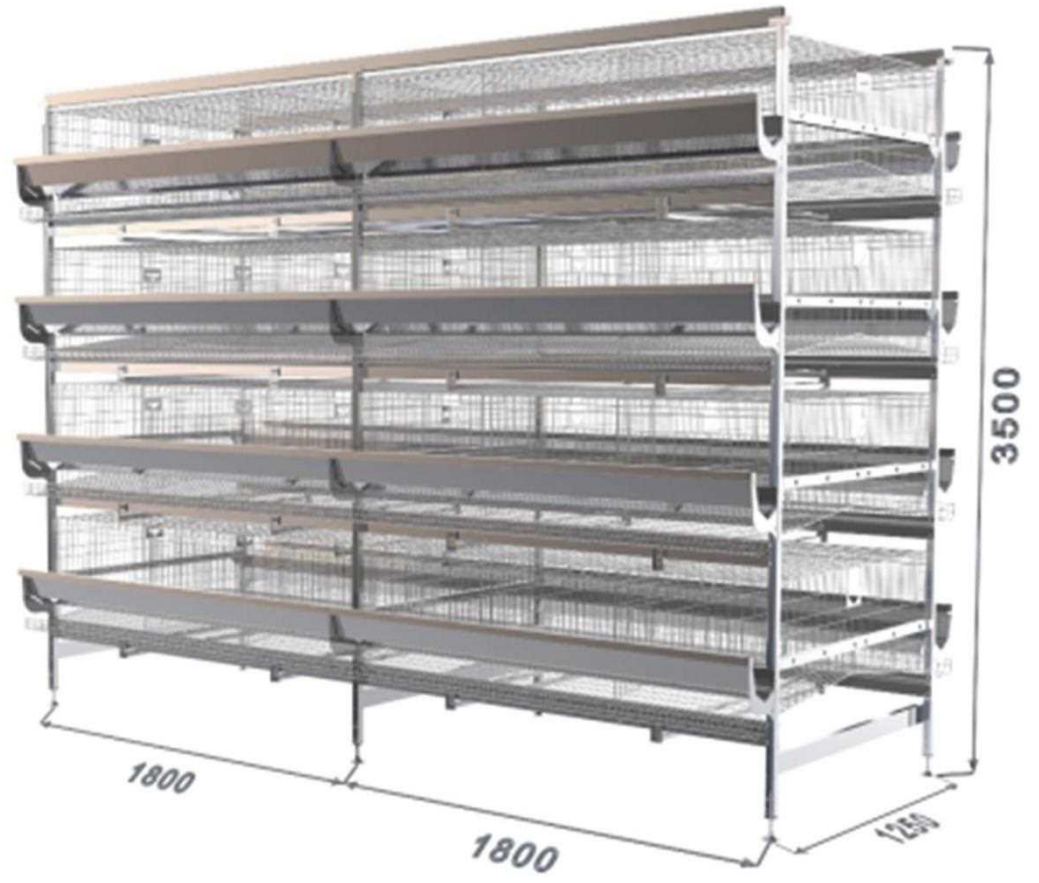
- Used to adjust the height to keep the cage system at the same level
- Made of # 304 stainless steel





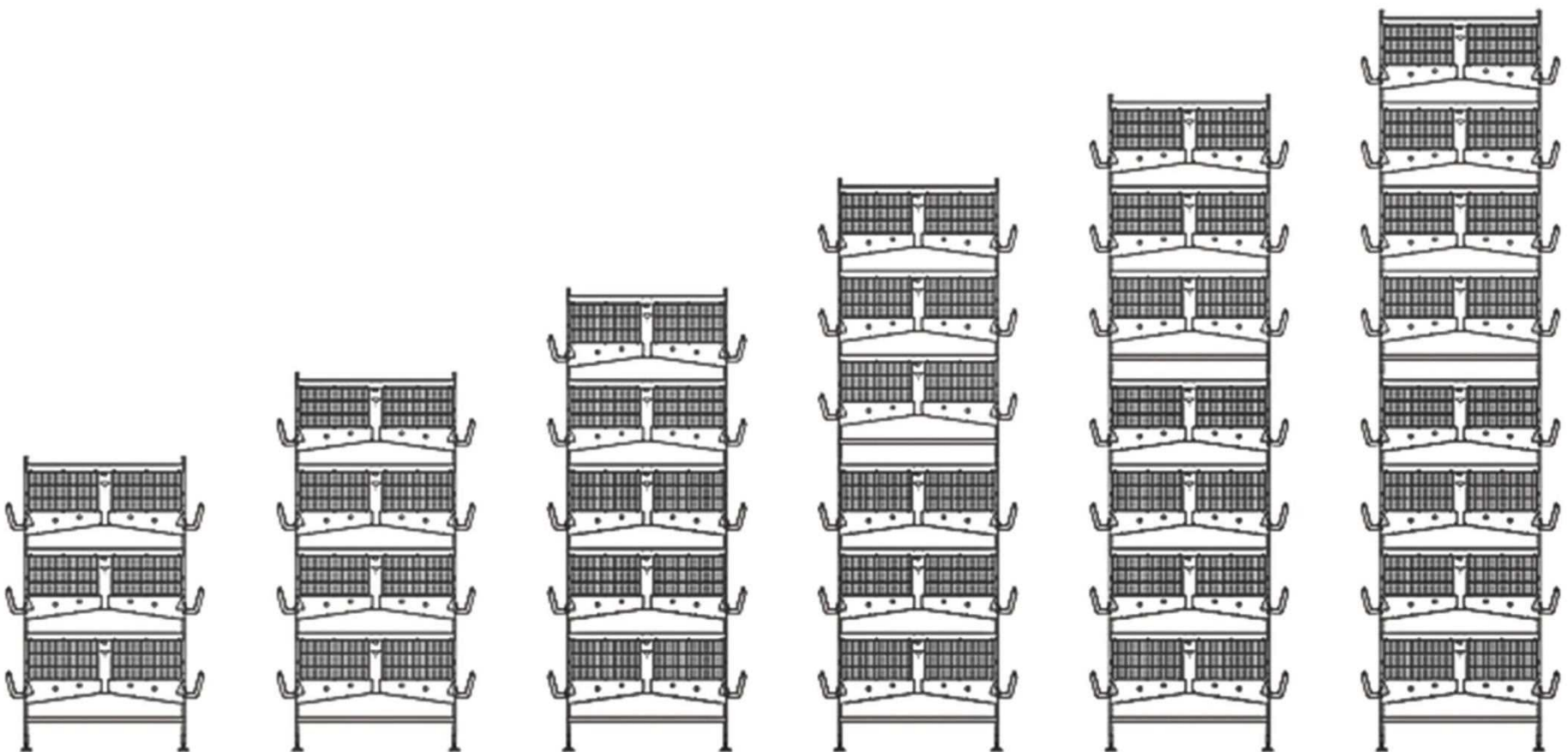


TechPro 1200



TechPro 1800

Type	Length/Section	Dimension/Cell	Cell/Unit	Birds/Cell	Floor Space/Bird
TechPro 1200	1200 mm	600*625*700 mm	8	36	416.67 sq.cm
TechPro 1800	1800 mm	600*625*700 mm	9	54	416.67 sq.cm



Tier	3	4	5	6	7	8	...
Height/mm	2714	3414	4114	5300	6000	6700	...

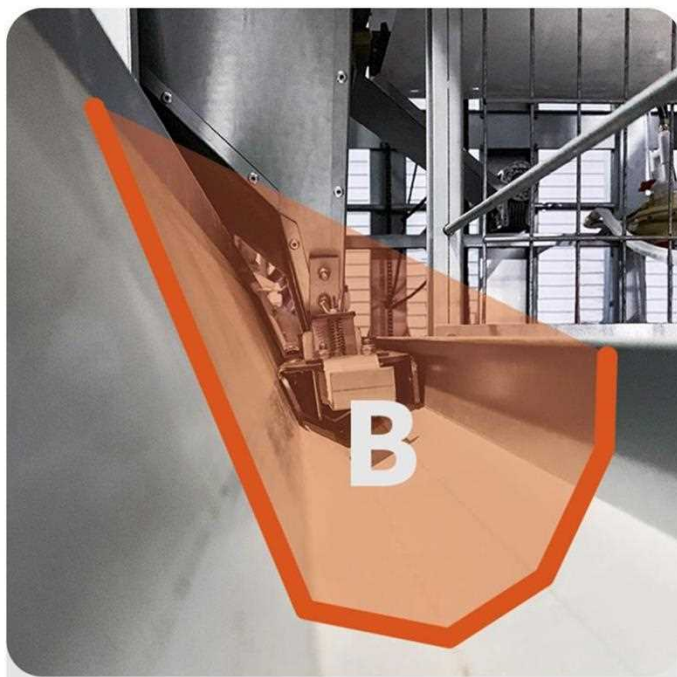




## AUTOMATIC FEEDING SYSTEM



- Made of 275g/m<sup>2</sup> hot-dipped galvanized steel sheet
- Main frame:  $\delta \approx 3.0$  mm
- Hopper support:  $\delta \approx 3.0$  mm
- Hopper:  $\delta \approx 0.8$  mm
- Capacity: 65kg for top hopper, 60 kg for rest hopper



- The trough is made of  $\delta \approx 1$ mm zinc-aluminum-magnesium co-ated steel sheet
- The V-shaped patented design at the bottom guarantee the minimum feed losses from dead angle and throwing during eating. Equipped with a feed adjuster which advanced in design
- The outer edge height of the feed trough is 98mm

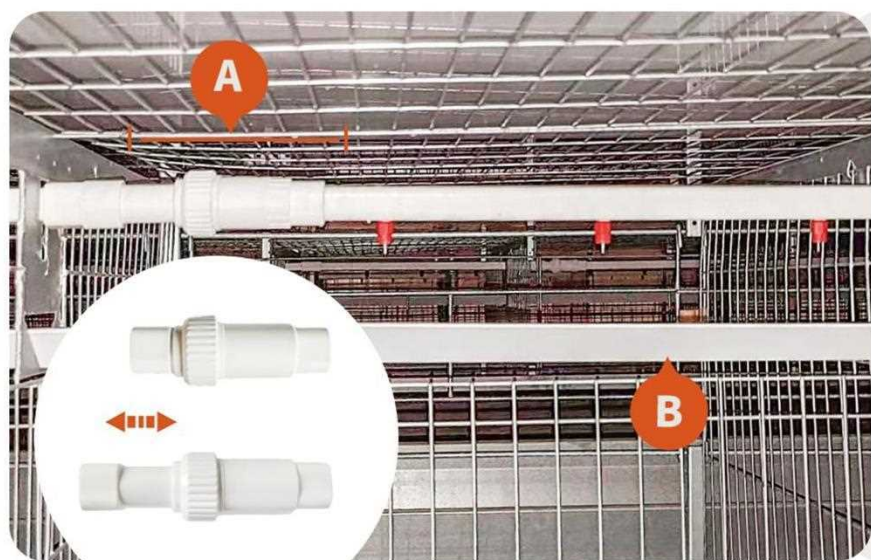


- Feed trough support:  $\delta \approx 2$  mm
- 275g/m<sup>2</sup> hot-dip galvanized sheet, one-piece stamped with reinforcement ribs
- As shown in the picture above, equipped with a trough brush for easy replacement and maintenance



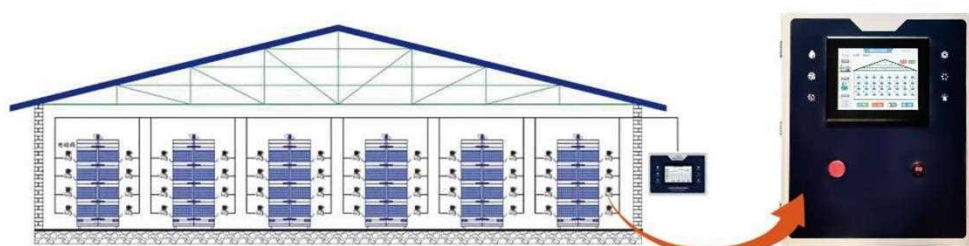


# AUTOMATIC DRINKING SYSTEM .



- Sufficient water supply for each bird thanks to the 3 nipple drinkers for each cage
- Drinking system use telescopic joints, which will not be affected by thermal expansion and contraction caused by external temperature

- The triangular design gives the best stability
- It can effectively prevent chickens and cage nets from being wet due to water leakage during the drinking process



## Smart Drinking Line Control System

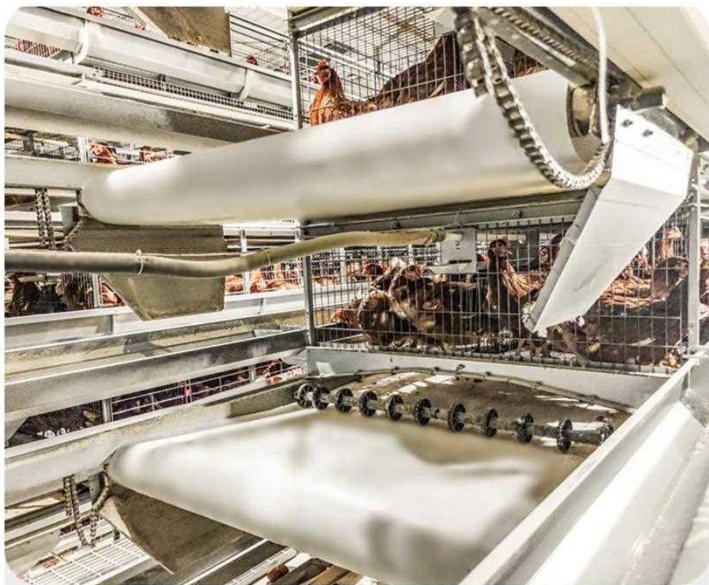
- Multiple function includes water supervision, pressure, PH data, Index analysis , dosing , warning, system update

- The water drinking system is equipped with the filter and backwashing device to reduce water pipe blockage
- The water drinking system is equipped with an alarm and data collection system to grasp the water situation of the chickens in real time and analysis the growth status





# AUTOMATIC MANURE REMOVE SYSTEM



- Manure removal machine: motor 1.5kW
- Manure belt speed: 2m-2.15/min
- Manure belt support is made of 275g/m<sup>2</sup> hot-dipped galvanized steel sheet, thickness  $\delta \approx 1.0\text{mm}$
- Manure belt:  $\delta \approx 1.1\text{mm} \sim 1.2\text{mm}$ , made of high quality new PP material



- The side panel of manure removal end set is made of 275g/m<sup>2</sup> hot-dipped galvanized steel sheet, thickness  $\delta \approx 3.0\text{mm}$
- Hot-dipped galvanized manure scraper with strengthen manure scraper system

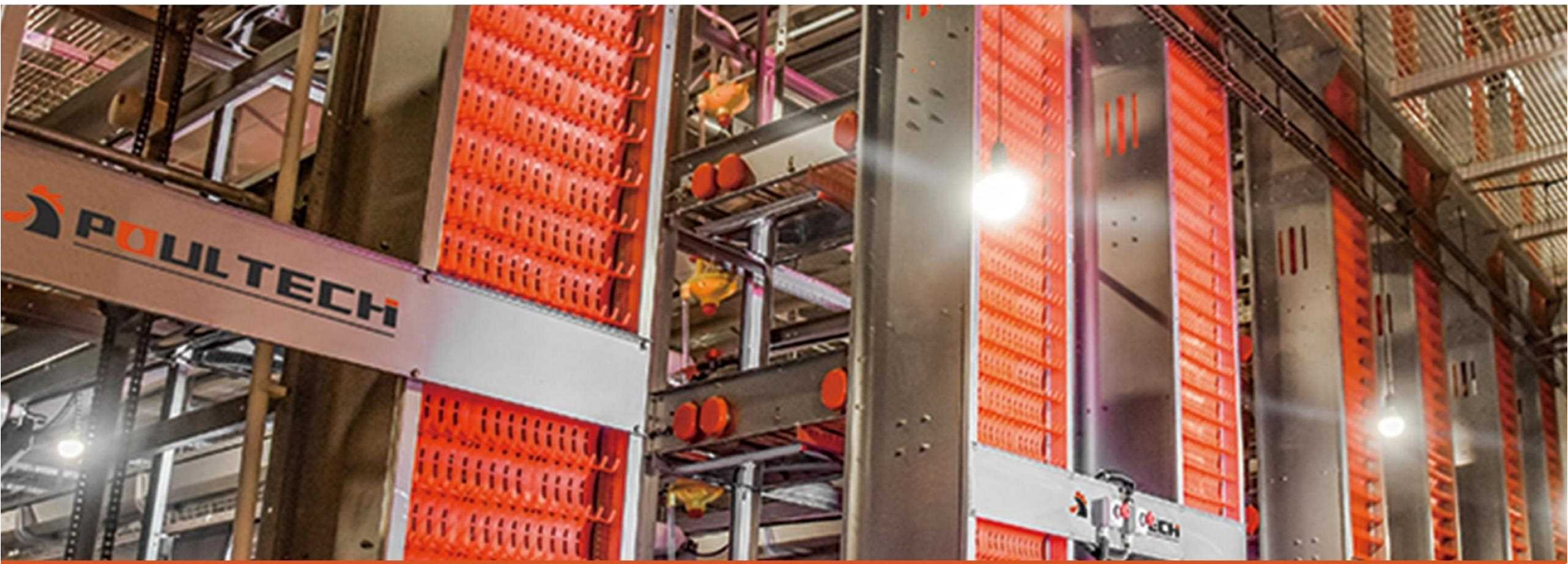


- The main transmission gear is made of 45# steel, and the driven gear is made of wear-resistant nylon, which is wear-resistant and noiseless
- The front and rear devices prevent the manure belt from deviating, while not damaging the belt itself





# AUTOMATIC EGGS COLLECTION SYSTEM.



- The white polypropylene weaving and high-strength polyester weftbelt combined to create a more adaptable eggbelt, the maximum load can reach 1587 kg
- Egg belt speed: 1.79-1.80 m/min



- Equipped with soft egg separation and diversion guide
- Reduce the contamination and collision of eggs, and ensure that soft-shell eggs and dirt are removed before reaching the egg storage house



- The egg collection machine is made of 275 g/m<sup>2</sup> hot-dipped galvanized steel sheet, thickness  $\delta=2\text{mm}$   
The sprockets made of No. 45 steel, quenched
- Driving motor: 0.55kW-70S for egg collection machine, 0.75kw-80S for egg belt



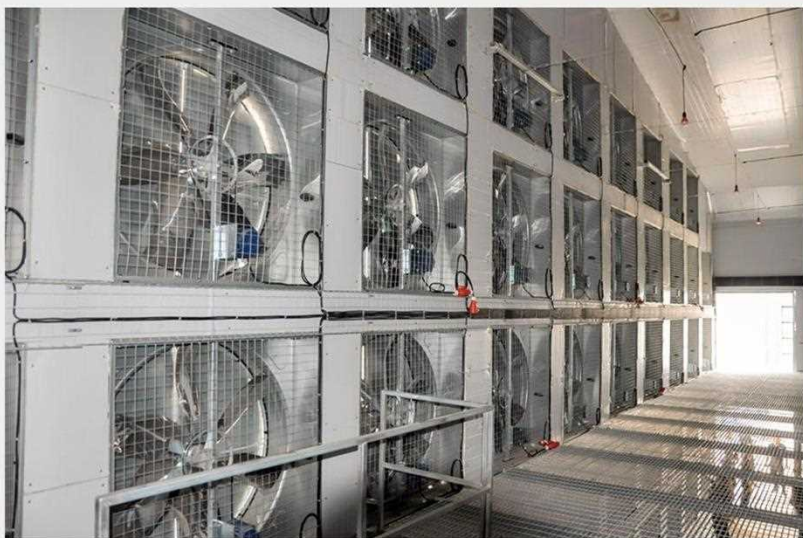
- The egg conveyor can collect and transfer eggs between different poultry houses at the same time, suitable for all types of layer battery cages, and with curved transportation and up-and-down slope transportation to fit different landform



When the egg conveyor needs to work outdoors, we add a protective cover to the conveyor to ensure that the eggs can be safely transported to the egg storage house



## VENTILATION SYSTEM.



- 275 g/m<sup>2</sup> steel material imported from Japan.
- 430BA stainless steel blades have been tested for dynamic balance, and the fan runs more smoothly and efficiently
- To control the speed of the wind and provides the comfortable somatosensory temperature for the chicken
- Eliminate harmful gases in the house



- According to the principle of atmospheric air flow mechanics, with mechanical exhaust and negative pressure air intake design, the indoor contaminated air can be quickly exhausted outdoors. After the outdoor fresh air is purified, it enters the house in a natural balance, forming an exchange of indoor and outdoor air flow, and maintaining the air quality of the indoor space.



- Maintain a good level of hygiene and comfort
- Provide chickens with sufficient oxygen
- Cooling pad can be used in conjunction with the wind plates to create a circulation inside the coop
- Protective netting can be added as required to protect the cooling pad from gnawing and damage





# ENVIRONMENT CONTROL SYSTEM.



- Ventilation smart controller imported from Tuffigo-Rapidex, France, by the control of different modules of the air inlet to achieve the constant temperature inside the poultry
- Avitouch can be personalized. And view your poultry house in 3D to get as close to reality as possible.
- On the screen you can see the main parameters: average temperature of the indoor detector, universal temperature set point, indoor humidity, minimum fresh air demand, ventilation status, total number of birds, water meter and feed weighing
- IOT system is available, all equipment and data can be monitored remotely

POULTRY





**OVER 1000 FARMS**  
worldwide choose  
**POUL TECH's** solution & equipment

- ✓ Farm & House Design
- ✓ Equipment Supply
- ✓ Equipment Installation Supervision
- ✓ Afte-sale Service 7 x 24 online

Products have been sold to more than

**60+**

countries and regions around the world

**-MORE TECH, MORE EGGS-**





# POULTECH

---



## ADDRESS

Building 10-1, Yuhua Power-Valley Industry Park, Chuangxin Avenue,  
Zhengzhou Hi-Tech Zone, 450001, Henan Province, China

## HOTLINE

+86-(0)371-56797621

## E-MAIL

poultech@aliyun.com

## MOBILE (WhatsApp & WeChat)

+86-13733845866

## WEBSITE

[www.cnpoultech.com](http://www.cnpoultech.com)



**HENAN POUL TECH MACHINERY CO.,LTD.**